

(207) 989 - 4884

sales@farleyassociates.com

Tailor-Made Heavy Load
Transportation Solutions

Revolutionizing Off-Highway
Transport with Next-Gen
Sustainable Vehicles

Up to **400 TON**
Load Capacity

Up to 880,000 lbs Load Capacity

Welcome to Fada

Battery Powered, Efficient, Innovative,
Movement, Automation

01

About Fada

P.16

02

Our Portfolio

P.29

03

Control and Safety Systems

P.35

04

Transfer Cart Technologies

P.43

01



About Us



 **FADA**

7

6

5

ARRE-RETRATTA

4

3

2

1

01 About Fada

About Us

Many years of experience, complete service and complete customer satisfaction.

FADA Engineering is an engineering and machinery company that carries out various intralogistics projects such as storage, convey, rotation and transfer applications in many areas of the industry, in line with customer demands, and combines past experiences with technology and transfers them to the future.

The main themes of the products and services of **Fada Engineering**, which determines customer satisfaction as the basic principle, are superior quality and sustainability. Thanks to our dynamic staff with up to 15 years of experience, our suppliers with whom we have long and strong relationships, and our understanding of quality with a perfectionist perspective, we establish long-term and reliable relationships by providing the highest level of service to our customers.

With the passion of being innovation-oriented and creating added value, we work with great devotion to increase the productivity of our customers by producing solutions at international quality standards in all processes, from identifying needs to product delivery.

In the light of these principles, **FADA Engineering**, by realizing dozens of projects from the past to the present, serves to meet the needs of its customers in many different sectors such as railway industry, defense, foundry industry, energy, iron and steel, aluminum and industrial automation, especially in the automotive and logistics sector.

WE ARE TOGETHER!



01 About Fada

Why Fada ?

Passion for R&D and Innovation

We are updating our route with investments, with our innovation-oriented vision; We benefit from all technological opportunities such as Industry 4.0, digitalization, modern technology and the internet of things, and we continue on our way by aiming to be one of the leading companies in the machinery manufacturing and to achieve sustainable growth with our works.

The Perfectionist Perspective

For customer satisfaction, we increase the competencies of our employees, follows national and international standards, protects nature with environmentally friendly products, creates a safe working environment and ensure the continuity by adhering to the principle of "safety first"

Technology and Human

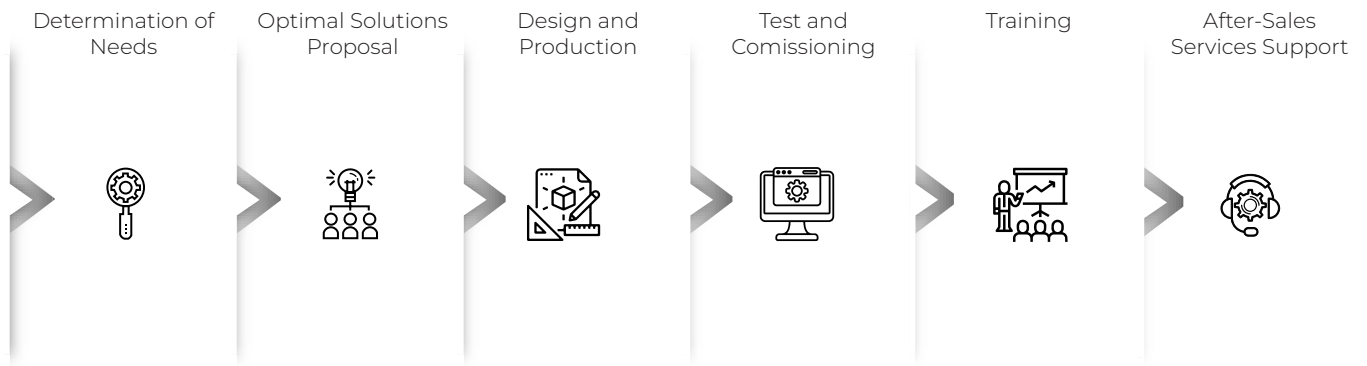
We train and support our employees with a dynamic, innovative and responsible vision that follows the latest technology.

QUALITY



01 About Fada

Work Flow Chart



1

Determination of Needs

2

Optimal Solution Proposal

3

Design and Production

4

Test and Commissioning

5

Training

6

After-Sales Services Support

01 About Fada

Work Flow Chart

1. The Significance of Training:

At Fada Engineering, well-trained employees are crucial for successful industrial transfer cart operation. Training ensures their proficiency in features, functionalities, and safety protocols, enhancing efficiency and promoting a safe work environment.

2. Importance of Test and Commissioning:

At Fada Engineering, Test and Commissioning are vital steps in the manufacturing process. This stage involves meticulous examination and verification of each transfer cart's functionality and performance. Our services aim to identify any potential issues, guarantee optimal performance, and provide customers with reliable and efficient solutions.

3. The Significance of After-Sales Services Support:

At Fada Engineering, we understand that the journey with our customers does not end with the delivery of the transfer carts. After-sales services support is a critical aspect of our commitment to customer satisfaction. Our goal is to ensure that our customers receive unparalleled support and assistance, even after the initial purchase.

4. Design and Production: Crafting Excellence for Customer Satisfaction

At Fada Engineering, we take immense pride in the quality and ingenuity that goes into the design and production of our transfer carts. As a company dedicated to meeting the diverse needs of our customers, we understand that the journey does not end with the delivery of our products. After-sales services support is a critical aspect of our commitment to customer satisfaction, and it all starts with the meticulous process of design and production.

5. Determination of Needs: An Essential Step in Enhancing Customer Satisfaction

At our company, customer satisfaction is our top priority in manufacturing industrial transfer carts. Therefore, we place great importance on the "Determination of Needs" process.

Understanding our customers' needs is a fundamental step in providing them with the most suitable solutions for their operational processes. We work diligently to listen to and comprehend the specific requests and operational requirements of each of our collaborating customers.

6. Optimal Solution Proposal: Customized Transfer Cart Solutions According to Needs

Our company adopts a customer-centric approach in the production of industrial transfer carts. The "Optimal Solution Proposal" process is a crucial step in providing our customers with the best transfer cart solutions that meet their needs.

We begin by understanding our customers' requirements through the "Identification of Customer Needs" process. We carefully assess the business processes, operational demands, and specific requirements of each customer we collaborate with.

**REDUCE
YOUR
CARBON FOOT PRINT
WITH
BATTERY POWERED
TRANSFER CARTS !**





01 About Fada

Industrial Sectors

Fada Engineering, with its design capability, offers high efficiency, low cost, fast and flexible transportation solutions for your industrial load transfer applications.

In this context, from past to present, Coil Handling and Sheet Carriage Trolleys for Iron and Steel Industry and Steel Service Centers; Die Transfer Carts for Automotive, Logistics Industries; Concrete Traverse Transfer Trolleys and Concrete Piece Transfer Carts for Concrete Block Production Sector; Tanker Transport Vehicles, Wagon Transfer Trolleys for Logistics, Railway and Trailer Manufacturing Industries; Wind Turbine and Blade Transfer Carts for the Energy Sector; Transformer Transport Carts, Transformer Transfer Trolleys for Transformer Manufacturing Sector; FADA carries out various studies on Ship Parts Transfer Carts, Yacht and Ship Transport and Transfer Carts for the Shipyard Industry.



AUTOMOTIVE



PRECAST CONCRETE



NUCLEAR



OIL & GAS



STEEL FOUNDRIES



WIND POWER



DEFENCE



POWER TRANSFORMERS

AND MANY OTHERS...

01 About Fada

Our Numbers

20⁺

Industries Served

220⁺

Client Served

60⁺

Highly Experienced Staff

3500⁺

Indoor Production
Facilities

15⁺

Years Sector Experience

700⁺

Project





YETKİLİ
PERSONEL
ÇOKERİ

TEHLİKE
Makineyi çalıştırırken
her zaman bu kurala uyun.

TEHLİKE
Bakış açısı
daimi olarak
özellikler

FAIDA MAX 35 TON

Revolutionizing Off-Highway Transportation with Next-Gen, Sustainable Vehicles

02



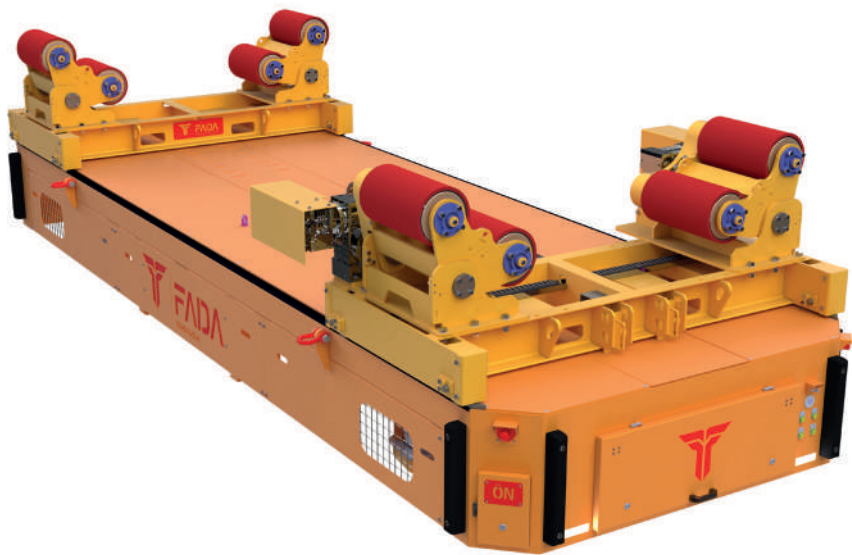
Our Portfolio

02 Our Portfolio

TRACKLESS TRANSFER CART (FTC)



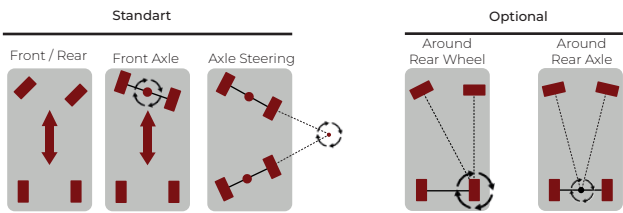
Please scan it to experience it in augmented reality.



- Remote and Autonomous Control
- Ergonomic Design
- Anti-collision Safety System
- Hydraulic Lifting Systems (Optional)
- Rotating Systems (Optional)

- Customized Top Platform Design for the Load
- Wheel Options Suitable for Ground

Technical Data



Capacity	5 tons to 400 tons (11.000lbs to 880.000lbs)	Power Source	Battery / Diesel
Speed	Up to 30m/min (Up to 100.00')	Motors	PMAC / AC High Efficiency Motors
Steering	Front Wheel Steering	Loading Table	On Request
Wheel Type	Rubber / Polyurethane	Security	Laser and Ultrasonic sensors, bumpers
Control	Remote Control / Autonomous	Dimensions	On Request
Certification	- OHS Regulations - EN Standards - CE Certified		



02 Our Portfolio

OMNI-DIRECTIONAL TRANSFER CART(MTC)

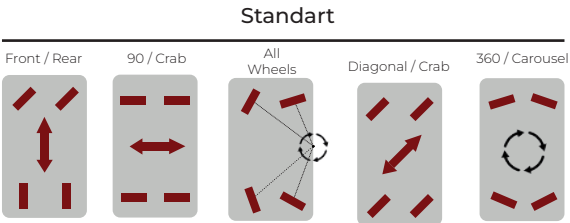


Please scan it to
experience it in
augmented reality.



- Remote and Autonomous Control
 - Ergonomic Design
 - Anti-collision Safety System
 - Hydraulic Lifting Systems (Optional)
 - Rotating Systems (Optional)
- Customized Top Platform Design for the Load
 - Wheel Options Suitable for Ground

Technical Data



Capacity	5 tons to 400 tons (11.000lbs to 880.000lbs)	Power Source	Battery / Diesel
Speed	Up to 30m/min (Up to 100.00')	Motors	PMAC / AC / DC High Efficiency Motors
Steering	All-Wheel Steering	Loading Table	On Request
Wheel Type	Rubber / Polyurethane	Security	Laser and Ultrasonic sensors, bumpers
Control	Remote Control / Autonomous	Dimensions	On Request
Certification	- OHS Regulations - EN Standards - CE Certified	Movements	360° rotation (Carousel) and crab movement (horizontal and diagonal movements)



02 Our Portfolio

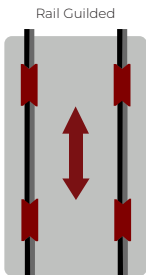
RAIL TRANSFER CART (RTC)



Please scan it to experience it in augmented reality.

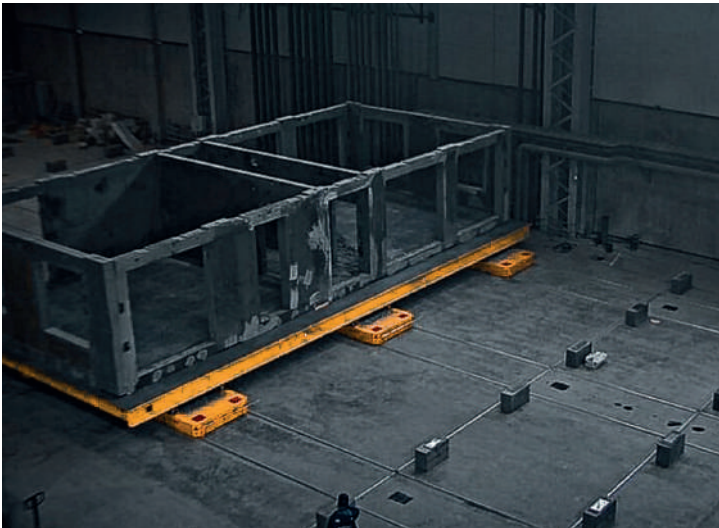


- Remote Control
 - Ergonomic Design
 - Anti-collision Safety System
 - Hydraulic Lifting Systems (Optional)
 - Rotating Systems (Optional)
- Customized Top Platform Design for the Load
 - Wheel Options Suitable for Ground



Technical Data

Capacity	5 tons to 400 tons (11.000lbs to 880.000lbs)	Power Source	Spring Drum, Bus-Bar, Cable Carrier, Battery, Diesel
Speed	Up to 60m/min (Up to 200.00')	Motors	AC / DC Electric Motor, Hydraulic / Pneumatic Actuator
Steering	Rail-Guided	Loading Table	On Request
Wheel Type	Steel / Casting Wheel	Security	Laser and Ultrasonic sensors, bumpers
Control	Remote Control / Autonomous	Dimensions	On Request
Certification	- OHS Regulations - EN Standards - CE Certified		



02 Our Portfolio

COIL HANDLING CART (CHC)

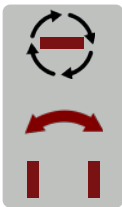


Please scan it to experience it in augmented reality.



- Remote Control
 - Ergonomic Design
 - Anti-collision Safety System
 - Hydraulic Lifting Systems (Optional)
 - Rotating Systems (Optional)
- Customized Top Platform Design for the Load
 - Wheel Options Suitable for Ground

± 90° steering



Technical Data

Capacity	5 tons to 50 tons (11.000lbs to 110.000lbs)	Power Source	Battery, Diesel
Speed	Up to 20m/min (Up to 65.00'/min)	Motors	PMAC / AC high efficiency motors
Steering	Single-Wheel Steering	Loading Table	On Request
Wheel Type	Vulcollan / Polyurethane	Security	Laser and Ultrasonic sensors, bumpers
Control	Remote Control / Autonomous	Dimensions	On Request
Certification	- OHS Regulations - EN Standards - CE Certificated		

02 Our Portfolio



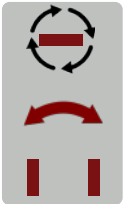
Please scan it to experience it in augmented reality.

DIE CHAGING and TRANSFER CART (DTC)



- Remote Control
 - Ergonomic Design
 - Anti-collision Safety System
 - Hydraulic Lifting Systems (Optional)
 - Rotating Systems (Optional)
- Customized Top Platform Design for the Load
 - Wheel Options Suitable for Ground

± 90° steering



Technical Data

Capacity	5 tons to 50 tons (11.000lbs to 110.000lbs)	Power Source	Battery, Diesel
Speed	Up to 20m/min (Up to 65.00'/min)	Motors	PMAC / AC high efficiency motors
Steering	Single-Wheel Steering	Loading Table	On Request
Wheel Type	Vulcollan / Polyurethane	Security	Laser and Ultrasonic sensors, bumpers
Control	Remote Control / Autonomous	Dimensions	On Request
Certification	<ul style="list-style-type: none">- OHS Regulations- EN Standards- CE Certificated		

02 Our Portfolio

HEAVY DUTY TRANSFER CART (HDC)

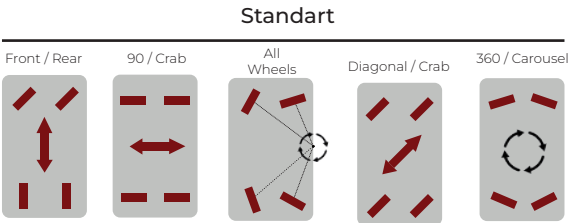


Please scan it to experience it in augmented reality.



- Remote and Autonomous Control
 - Ergonomic Design
 - Anti-collision Safety System
 - Hydraulic Lifting Systems (Optional)
 - Rotating Systems (Optional)
- Customized Top Platform Design for the Load
 - Wheel Options Suitable for Ground

Techinal Data



Capacity	100 tons to 400 tons (220.000lbs to 880.000lbs)	Power Source	Battery / Diesel
Speed	Up to 20m/min (Up to 65.00'/min)	Motors	PMAC / AC High Efficiency Motors
Steering	All-Wheel Steering	Loading Table	On Request
Wheel Type	Vulkollan	Security	Laser and Ultrasonic sensors, bumpers
Control	Remote Control / Autonomous	Dimensions	On Request
Certification	- OHS Regulations - EN Standards - CE Certified	Movements	360° rotation (Carousel) and crab movement (horizontal and diagonal movements)

02 Our Portfolio



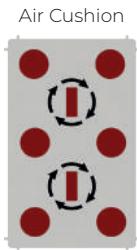
Please scan it to experience it in augmented reality.

AIR CUSHION VEHICLE (ACV)



- Remote Control
 - Ergonomic Design
 - Anti-collision Safety System
 - Hydraulic Lifting Systems (Optional)
 - Rotating Systems (Optional)
- Customized Top Platform Design for the Load
 - Wheel Options Suitable for Ground

Technical Data



Capacity	100 tons to 400 tons (220.000lbs to 880.000lbs)	Power Source	Battery, Diesel
Speed	Up to 12m/min (Up to 40.00'/min)	Motors	Pneumatic
Steering	Single-Wheel Steering	Loading Table	On Request
Wheel Type	Rubber / Polyurethane / Vulkollan	Movements	Laser and Ultrasonic sensors, bumpers
Control	Remote Control / Autonomous	Dimensions	360° rotation and crab movement and diagonal movements
Certification	- OHS Regulations - EN Standards - CE Certificated	Air Power Source	87-116 psi, 883 SCFM

02 Our Portfolio

FLATBED TRANSPORTER (FT)

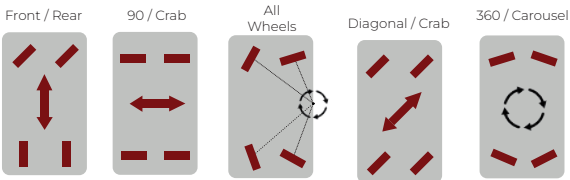


Please scan it to experience it in augmented reality.



- Remote and Autonomous Control
 - Ergonomic Design
 - Anti-collision Safety System
 - Hydraulic Lifting Systems (Optional)
 - Rotating Systems (Optional)
- Customized Top Platform Design for the Load
 - Wheel Options Suitable for Ground

Standart



Technical Data

Capacity	100 tons to 400 tons (220.000lbs to 880.000lbs)	Power Source	Battery / Diesel
Speed	Up to 20m/min (Up to 65.00'/min)	Motors	PMAC / AC High Efficiency Motors
Steering	Mechanical, Electronic	Loading Table	On Request
Wheel Type	Solid Rubber, Tyre, Polyurethane	Security	Laser and Ultrasonic sensors, bumpers
Control	Remote Control / Autonomous	Dimensions	On Request
Certification	- OHS Regulations - EN Standards - CE Certified	Movements	360° rotation (Carousel) and crab movement (horizontal and diagonal movements)

02 Our Portfolio

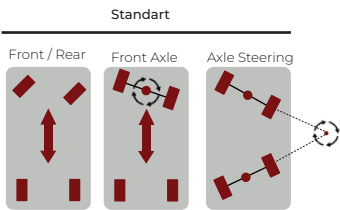
ELECTRIC TRUCKS (ET)



Please scan it to experience it in augmented reality.



- Remote and Autonomous Control
- Ergonomic Design
- Anti-collision Safety System
- Rotating Systems (Optional)
- Customized Top Platform Design for the Load
- Wheel Options Suitable for Ground



Technical Data

Capacity	5 tons to 400 tons (11.000lbs to 880.000lbs)	Power Source	Battery / Diesel
Speed	Up to 30m/min (Up to 100.00'/min)	Motors	PMAC / AC High Efficiency Motors
Steering	Front Wheel Steering	Loading Table	On Request
Wheel Type	Solid Rubber, Tyre, Polyurethane	Security	Laser and Ultrasonic sensors, bumpers
Control	Remote Control / Autonomous	Dimensions	On Request
Certification	- OHS Regulations - EN Standards - CE Certificated		

03



Control and Safety Systems

03 Control and Safety Systems

Control Systems

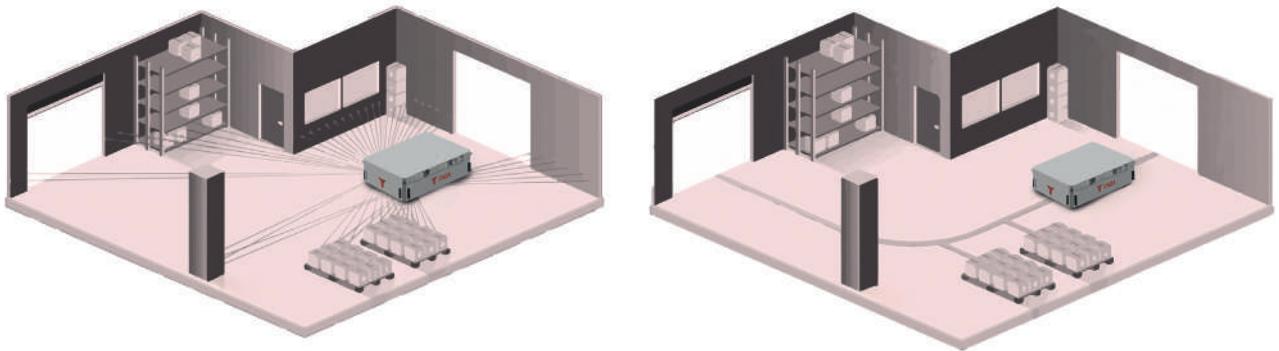
Remote, MTG,
Natural Navigation

Industrial transfer carts are often used for moving heavy loads and the four control systems mentioned allow for the use of these carts in various circumstances and different conditions.

1- Remote Control: This control system allows an operator to control the transfer cart from a certain distance. The remote control is an important safety feature, especially when working in hazardous or hard-to-reach areas. It is useful in situations that require the operator to be near the cart.

2- Magnetic Track Guided: Magnetic track guided allows a transfer cart to move automatically on a specific path. This system is often used for transfer carts that move regularly on a specific route in factories or warehouses. The cart proceeds on the route where magnetic tapes are placed and follows this tape.

3- Natural Navigation: The natural navigation control system allows the transfer cart to operate on its own, without the need for human intervention. These systems typically use sensors, artificial intelligence, and machine learning technologies to make the cart interact with its environment. Autonomous control systems can follow complex routes and automatically respond to various obstacles.



Our Partners :

SICK
Sensor Intelligence.

Leuze

BLUEBOTICS
— Your Vehicle Navigation Partner

NAVITEC
SYSTEMS

tele radio[®]
wireless solutions



03 Systems

Safety Systems

Safety Laser Scanner, Ultrasonic Sensor, Bumper, Laser Lights, Warning Lights

Laser Scanner: Laser scanners are sensors used to provide safety measures for industrial transfer carts. They use laser beams to continuously scan their surroundings and detect objects in the environment. By performing these scans, they can identify obstacles around the cart and minimize the risk of collisions. If an obstacle is detected, the system may reduce the cart's speed, bring it to a stop, or alert the operator. This provides an important safety layer for protecting workers and preventing damage to goods.

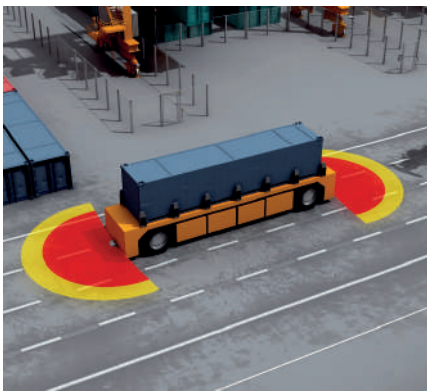
Ultrasonic Sensor: Ultrasonic sensors are another safety system used for distance and obstacle detection in industrial transfer carts. These sensors emit sound waves to measure distances and prevent potential collisions. The sensors send out ultrasonic waves, and by measuring the time taken for the waves to bounce back after hitting an object, they can determine the distance to nearby objects. This information can be used to automatically slow down or stop the cart to prevent collisions.

Bumper: Industrial transfer carts are typically equipped with bumpers at their front and rear. These bumpers serve to cushion the impact in case of a collision, reducing the risk of damage to both the cart and the surrounding materials. Considering that transfer carts can potentially be hazardous even at low speeds, bumpers help mitigate the effects of such collisions.

Laser Light: Laser lights are often installed on industrial transfer carts as a visual safety feature. These lights project a visible laser line in front of or around the cart, warning nearby workers of the vehicle's presence and its intended path. This helps enhance awareness in busy industrial environments, reducing the chances of accidents.

Warning Light: Flashing or rotating warning lights alert nearby personnel when the cart is moving, enhancing visibility and reducing accident risks.

These safety systems are used to ensure worker safety and protect equipment during the operations of industrial transfer carts. Thanks to automation and sensor technologies, these vehicles can perceive environmental factors more accurately and minimize collision risks, creating a safer working environment.



Our Partners :

SICK
Sensor Intelligence.

Leuze

PEPPERL+FUCHS

TURCK



LASER
SCANNER

EMERGENCY
STOP

ULTRASONIC
SENSOR

BUMPER

04



Transfer Cart Technologies

04 Transfer Cart Technologies

Our Options



SPECIAL VEHICLE DIMENSIONS

The standard size of our vehicles is W: 7 ft 6 in × L: 14 ft 9 in × H: 2 ft 9 in. Vehicle dimensions can be changed according to the operation or demand.



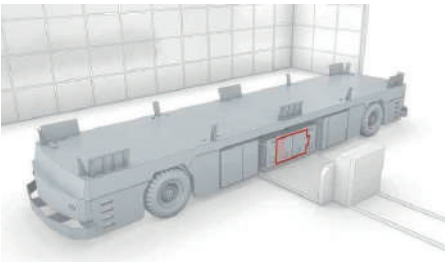
SPECIAL DESIGN TOP TABLE

Customisable top table designs are used in our transfer trolleys according to the load and load geometry to be transported.



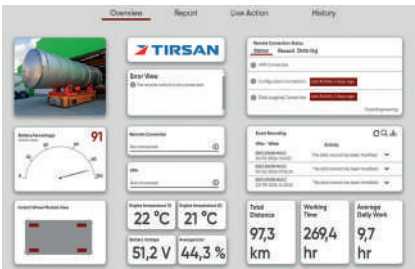
HYDRAULIC LOAD LIFTING

Hydraulic lifting feature can be added to the vehicle upon need and demand. It is offered as an option.



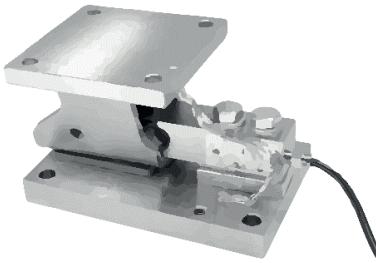
QUICK BATTERY REPLACEMENT KIT

If it is desired to change the battery of the vehicle easily, a quick change kit can be designed for this.



IoT (Internet Of Things)

With our IoT solutions integrated with the ECU, data such as battery charge status, voltage, current, temperatures, service time, wheel angles, and commands can be instantly monitored via the web.



LOAD WEIGHING SYSTEM

It is used to measure the weight of the product placed on the vehicle. It can be integrated upon request.



MULTIFUNCTION REMOTE CONTROL WITH JOYSTICK

It is the remote control that we use as standard in our vehicles. Many information such as battery percentage, speed, manoeuvre selection can be displayed on the screen on the remote control. Joysticks make it easy to use.



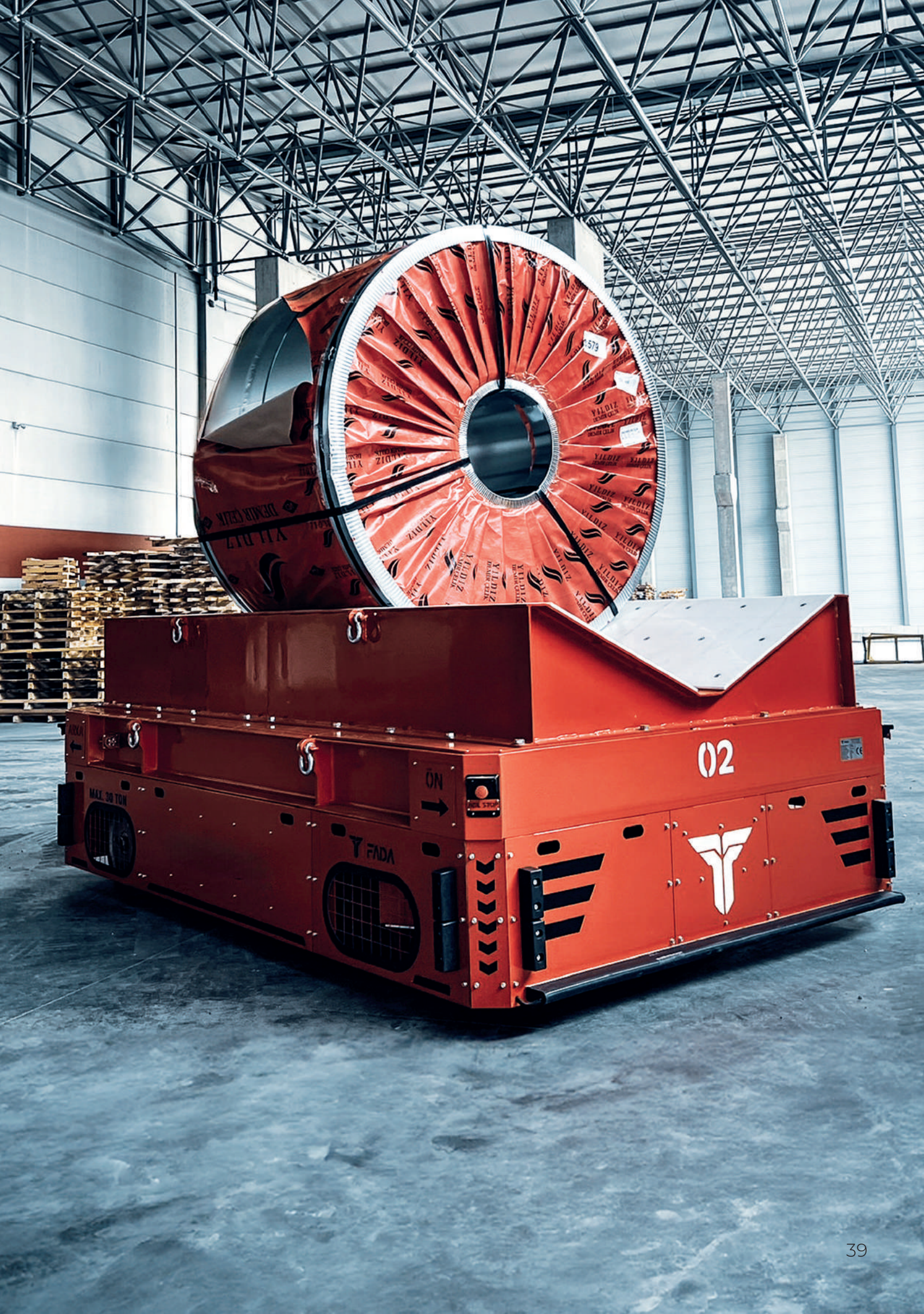
HMI DISPLAY

Thanks to the HMI screen on the vehicle, you can view information such as alarm information, battery percentage, operating mode. It is used as standard in our vehicles.



WIRELESS CHARGING KIT

Depending on demand or operation, a wireless charging unit can be integrated into the cart as an option.



After-Sales Support



After-sales support is crucial to ensure the continuous and effective operation of industrial transfer cars. This service includes various maintenance services, part replacements, technical support, and training.

Remote Service Kit

With our 24/7 remote connection support for our transfer carts, we can quickly intervene in case of any malfunction or request. This way, you can benefit from our technical support service without any interruptions in your operations.





We are looking for partners with whom we can grow together and establish long-term business partnerships.

We continue to make a difference in logistics and production processes worldwide with our transfer cars. Join our sales and distribution network in your region and become our distributor, offering the most innovative and reliable solutions in the industry. With the assurance of FADA Engineering, let's grow together and build a strong partnership in your local market.

